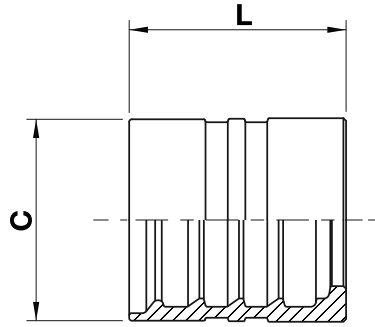


Two piece fittings - Universal series for wire braided and 4 spiral hydraulic hoses

S0420

Skive ferrule

R9-4SP-4SH Soymalı soket



code	ø hose			C		L	
	dn	inch	size	mm	in	mm	in
S0420-04	6	1/4	04	22,0	0,87	30,0	1,18
S0420-05	8	5/16	05	24,0	0,94	30,5	1,20
S0420-06	10	3/8	06	26,0	1,02	32,0	1,26
S0420-08	12	1/2	08	30,0	1,18	34,5	1,36
S0420-10	16	5/8	10	33,0	1,30	38,0	1,50
S0420-12	19	3/4	12	38,0	1,50	40,5	1,59
S0420-16	25	1	16	46,0	1,81	53,0	2,09
S0420-20	31	1.1/4	20	55,0	2,17	58,0	2,28
S0420-24	38	1.1/2	24	62,0	2,44	71,0	2,80
S0420-32	51	2	32	78,0	3,07	85,0	3,35

Please refer to our crimping charts for application details of each size

Skive ferrule for: EN 853 2SN / SAE 100 R2AT / EN856 4SP / SAE 100 R12 / EN 856 4SH / ISO 18752 / SAE 100 R15