

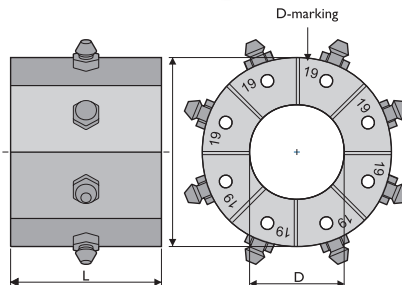


# P32NMS

DESIGNED FOR THE TOUGHEST ENVIRONMENTS

Finn-Power P32NMS is strong, fast and reliable crimping machine for any service crimping need. This model turns hydraulics off to conserve energy, and to reduce workplace noise levels whenever the machine is idle.

TECHNICAL DATA	
Max crimping dia (mm) <sup>1)</sup>	87
Max crimping dia (inch) <sup>1)</sup>	3.42
Max crimping force (kN)	2000
Max crimping force (tonnage)	200
Cycle time 10 mm (s) <sup>2)3)</sup>	4.0/16.1
Hose size ID (inch)	2 (4SH)
Die set series	32
Max opening (mm) <sup>4)</sup>	+33
Max opening without dies (mm)	132
Master die D/L (mm)	99/80
Master die D/L (inch)	3.90/3.15
Motor Power (kW/HP) <sup>3)</sup>	4.0/5.5 1.5/2.0
Oil tank volume	27 l
DIMENSIONS (LxWxH)	
(mm)	675x520x620
(inch)	26.6x20.4x24.4
WEIGHT (KG/LBS)	
190/419	



- 1) With standard dies. Crimping range can be increased with special dies.
- 2) Theoretical with 10 mm cycle.
- 3) 3-phase/1-phase
- 4) Maximum opening is the total die travel. Add this value to the minimum crimping diameter of the die set used. The result is the maximum opening of the machine with die set in place.

## CONTROL

MS

## OPTIONS

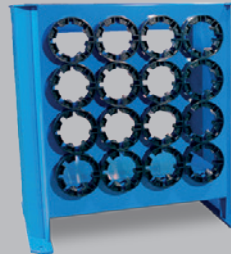
- Foot pedal (factory installation only)
- Mechanical back stop device
- Tool base (20 slots) with QuickChange-tool
- Tool rack with QuickChange-tool



Foot pedal as an option (factory installation only).



Tool base (20 slots) with QuickChange-tool as an option.



Tool rack with QuickChange-tool as an option.

## DIE SET 32-SERIES

DieSetNo	D (mm)	L (mm)	Crimp. range (mm)
18506/10	10	55	10.0-12.0
18506/12	12	55	12.0-14.0
18506/14	14	55	14.0-16.0
18506/16	16	55	16.0-19.0
18506/19	19	55	19.0-22.0
18506/22	22	70	22.0-26.0
18506/26	26	70	26.0-30.0
18506/30	30	70	30.0-34.0
18506/34	34	75	34.0-39.0
18506/39	39	75	39.0-45.0
18506/45	45	90	45.0-51.0
18506/51	51	90	51.0-57.0
18506/57	57	100	57.0-63.0
18506/63	63	110	63.0-69.0
18506/69	69	110	69.0-75.0
18506/74	74	110	74.0-80.0
18506/78	78	110	78.0-87.0

In addition to the standard die sets, a wide range of special die sets is available on request.